

# F-12I

## FETAL MONITOR

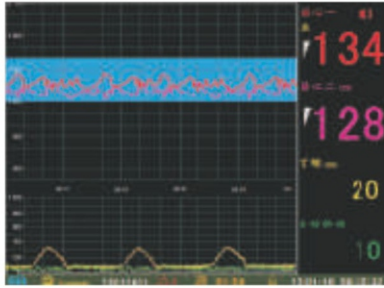


### FEATURES

- 12.1" colorful LED display
- Flexible , light design , easy operation
- Flip-Screen from 0 to 90 degree , large font ,
- multi interfaces display
- 60 hours CTG storage , reviewing , print ,
- Power-fail data storage
- Simultaneously maternal and fetal parameters display
- Monitoring single fetus , twins and triplets( optional)
- Fetus Wakeup function ( Optional )
- High quality LEMO connector

### STANDARD PARAMETERS:

FHR , TOCO , FM



Standard Interface for three parameters: FHR, TOCO, FM



Big Font interface



High Capacity Lithium Battery 3.5Hours battery life



High quality LEMO Connector

## FHR

Measurement range: 50 to 210  
Normal range : 120 to 160 bmp  
Alarm range :  
Up limitation 160,170,180,190 bmp  
bottom : 90 , 100 , 110 , 120 bmp

## TOCO

0 to 100 Kpa

## AFM

Remark time by hand  
The effective interval should be in 5 seconds  
Bandwidth 0.1 to 2.5 H

## Curve Display

Curve line display supported by  
American standard 30 ~ 240  
International standard 50~210

## Frequency

1.0 MHZ

## Probe

12 crystals in probe  
Wide-beam , multi-crystal water proof FHR probe , high sensitivity , stable signal detection  
Flat surface waterproof TOCO pobe  
Beam /soud intensity <5 mw/cm2

## Optional Parameters

### NIBP

Measurement range:  
Systolic pressure 6.7 ~ 32 kpa(50 ~ 240 mmHg)  
Average pressure 3.4 ~ 26.6 kpa(22 ~ 200 mmHg)  
Diastolic pressure 2 ~ 24 kpa (15 ~ 180 mmHg)  
Accuracy  $\pm 1.1$ kpa (  $\pm 8$ mmHg or  $\pm 5\%$  of reading)

## Ultrasonic Intensity

Less than 5 mw/cm2

## Alarm& Data

Audible and visual alarming ,  
50 groups alarm events reviewing  
60 hours CTG storage ,  
power failure data storage  
Fischer Analysis results automatically

## Battery

Built-in rechargeable lithium battery,  
3.5 hours for battery life

## Bulid-in Thermal Printer

150/152mm wide paper ,  
compatible with American/International standard  
25 mm/s high speed playback  
and print function

## Work Environment

Operating Temperature (5°to 40°C)  
Storage Temperature (-10°to 55°C)  
Operating Humidity less than 85 %

## Power Requirement

Voltage AC110-240V,50/60HZ

## SPO2

Measurement range 70% ~ 99 %  
Accuracy  $\pm 3\%$

## Pulse rate

Measurement range 30 bpm ~ 240 bpm  
Accuracy  $\pm 2$ bmp